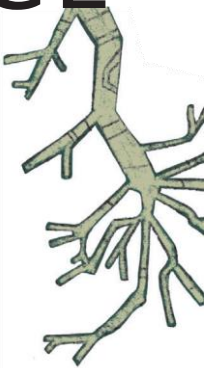
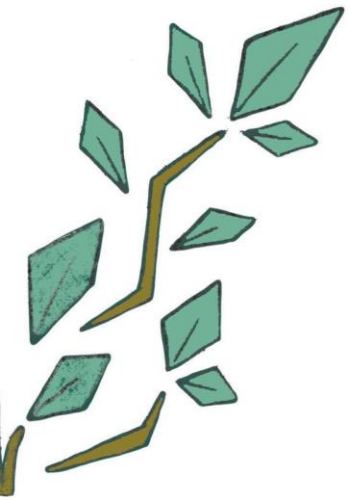


31st ANNUAL

Blue Ridge

UNDERGRADUATE
RESEARCH CONFERENCE



PROGRAM

APRIL 10, 2025

Hosted by MILLIGAN UNIVERSITY

9:30-10:30 SOCIAL SCIENCE POSTER SESSION

Moderated by Lindsey Rufenacht	Gregory Lobby
A Healing Inheritance: Appalachian Wildcrafting Explored in Literature and Storytelling	Bethany Hicks
Authoritarian Behaviors in Criminal Justice	Emma Bradley
Beyond Bars: Exploring the Causes, Consequences, and Solutions	Sydney Laye
Consumer's attitude towards adopting self-driving cars as a substitute for Uber	Trey Massengill
Coping with Communication Anxiety in Transplant Recipients	Sylvana Lipe
Exploring Family Dynamics Among Caregivers of Children with Cancer.	Jocelyn Ramos-Chears
Food Insecurity Among Students at Milligan University	Samantha Maldonado
How does Christian Belief Affect Consumer's Response to AI-Oriented Service Failure	Preston Miller
The Effect of Decision Difficulty on Consumer Purchase Intention and Uncertainty: The Role of Price Divisibility and Decision Orientation	Azaliia Gabdrakipova
The Effect of Religiosity and Hopelessness	Sophie Dunman
The Intricate Effect of Temporal Perspective and Visual Entropy Cues on Unhealthy Diet Choices	Matthias Herrmann
The Role of Religious Aspects on Forgiveness	Kevin Watson
What's That Smell? Why the Bristol Virginia Landfill was bound for failure	William Kirkland, Tanner Hunley

9:45-10:45 Oral Sessions

Psychology 9:45-10:45am	Moderator: Rebecca Sapp	Derthick 210
Roots of Resilience		Mark Matthews
The Influence of the Big Five Personality Traits on Mental Health Outcomes Among College Students		Trinity Caridas
The Mind-Body Connection: Exploring Psychological Resilience in Athletes		Samuel Calini
Milligan University Counselor-in-Training Self-Efficacy: A Pilot Study		Jeremy Yanopoulos

English 9:45-10:45am	Moderator: Kevin O'Donnell	Derthick 208
Cold-Blooded: My Experience Reading Truman Capote's Masterpiece, In Cold Blood		Liam Shope
The Brutal Reality of Slavery: Reflections on Frederick Douglass's 1845 Nonfiction Narrative		Jonah Hilmon
The Future of Nature: Notes on Under a White Sky, by Elizabeth Kolbert		Shariah Alvarenga
Wilderness and Womanhood: A Review of Wild, by Cheryl Strayed		Jaxen Waggoner

Humanities 9:45-10:45am		Moderator: Mary Jackson	Derthick 207
Resurgence of Romanticism in Contemporary Times			Autumn McDonald
Sir Gawain and the Green Knight as Reflected in The Lord of the Rings			Gabriella Collins
The Evolution of Revenge: From Justice to Corruption in Shakespeare's Revenge Tragedies			Jessi Patton
The Original Creepypasta: Unraveling the Uncanny in Washington Irving's The Legend of Sleepy Hollow			Meredith Block

STEM 9:45-10:45am		Moderator: Kelly Vaughan	Derthick 108
Greener Synthesis of Antimicrobial Peptides for Treatment of Pseudomonas Aeruginosa Infections			Ashley Brown
Methicillin-resistant Staphylococcus aureus (MRSA) and its Resistance Capabilities Against Lavengal.			Xavier Poore
Sugar or Sweetener?: Lipid Accumulation of Non-Nutritive Sweeteners in C. elegans			Brooklynn Quark
The Effects of Abiotic Factors on Cyanobacteria Growth and Their Release of Cyanotoxins			Riley Hines

STEM 9:45-10:45am		Moderator: Mark Burnham	Derthick 110
Enhancing Biodiversity Through Native Plant Gardening: The Role of Individual Small-Scale Actions in Landscape-Level Conservation.			Rebecca Webb
Exploring the Impact of Seasonal Variability on Mammalian Species Diversity in Eastern Tennessee			Jordan Rambo
Geographic Influences on Black Willow (Salix nigra) Phenology and Floral Characteristics			Angel Norris
Top-Down Influence of Salamanders on Soil Arthropod Abundance, Diversity, and Community Composition.			Hayden Oglesby

11:00-12:00 Keynote Lecture

Woodlands of the Mind: How Two ETSU Teachers Collaborated on a Book about College Forests



Dr. Kevin O'Donnell
Professor of English
ETSU



Dr. Scott Honeycutt
Associate Professor of English
ETSU

Over the past few years, Scott Honeycutt and Kevin O'Donnell have collaborated on a collection of essays which is now (March 2025) in production at the University of Georgia Press, entitled "Woodlands of the Mind: Rambles through Campus Forests in the Eastern U.S." In order to research and write their book, the two ETSU English professors visited 15 campus forests in 11 different states. For their keynote at the Blue Ridge Undergraduate Research Conference, the two will give a tag-team style presentation in which they discuss their research and writing processes and read excerpts from the work. They will also invite listeners to appreciate the beauty of some exceptional trees on Milligan University's own campus.

12:45-1:45 STEM POSTER SESSION

Gregory Lobby	
The Start-Stop Enigma: Unraveling the Code of Phage Elee	Kevin Perez, Michael Baker William Myers, Jadin Allen
A Comparative Analysis of Physiological Adaptations between the Native and Invasive Populations of Turtles	Phoebe Racicot
Annapurna: A Phage with Altitude	Hannah Joseph, Annabelle McDaniel, Kelsey Towle, Kati Pourfarzib
Beyond Books: Libraries Empowering Communities Through Digital Navigation	Emil Orea
Contaminant levels in King University's water	Riley Palmer Isabelle Clark Kayla Crumley
Food for Thought: How Blue Crabs React to a Snack	Lily Norton
Investigating Mitochondrial Effects of Nicotine Pre-treatment as Protection from Pesticide induced Neurodegeneration	Cassie Lane
LC-MS Analysis of Anti-Microbial Dipeptides	Maxwell Brown
Mice Models and Microplastics: How Microplastics Are Disrupting Reproductive Health from the Inside Out	Heidie Aguilar, Chloe Clayton
Microwave-assisted synthesis of ethosuximide	Grace Ellis
Puff, Puff Prescription: A Toxicological Look into Medical Marijuana versus Recreational Marijuana	Aleya Ebner
Quality of life of Leiomyosarcoma survivors: Continued screening for recurrence	Caroline Brown
Are Naturally Derived Non-nutritive Sweeteners Better than Artificial Sweeteners?	Taylor Sharp
Synthesis and lipophilicity of the trifluoroacetamido derivative of actarit	Jacqueline Medellin
Synthesis of the trifluoroacetamido derivative of acamprosate	Jeanpaul Santamaria
The Darkside of AI in Cybersecurity	Jalyn Thompson
Tickled Pink: Uncovering the Illusion of Glamour and Highlighting the Risks of Pink Cocaine	Ashlee Slick, Brett Miller

1:30-3:30pm TECHNICAL DEMONSTRATIONS

Derthick Porch or 1 st Floor Lobby	
Solar Powered Charging Station	Mykael White, Samantha Van Vuure, Joshua Lail, Mackenzie LaFrance, Sean Clark
Solar-Powered Grinding System for Turkana, Kenya	William Seitz, Ty Lamb, James Berkheimer Andrew Norman, Megan Miles
Solar Powered Cookstove	Albert Montragull Roca, Ty Yurkovich Jacob Russell, Adin Papell, Corey Greeson

1:00-2:00 Oral Sessions

Humanities 1:00-2:00pm	Moderator: Natalie Sweet	Derthick 208
Domestic Abuse in Susan Glaspell's Trifles and Sophie Treadwell's Machinal		Alia Serrano
Laura Wingfield's Distortion of Character in Tennessee Williams' The Glass Menagerie		Allie Elmore
Til Death Do Us Part: The Entrapment of Women in Machinal, Trifles, The Glass Menagerie, and The Iceman Cometh		Bethany Marsh
Twenty-five years in one job an I never missed a day: Technology, Automation, and Social Degradation in Elmer Rice's The Adding Machine		Jacob Link

Graduate Theology 1:00-2:00pm	Moderator: Kip Elolia	Derthick 201
Karl Barth's Theology of Resistance		Anthony Bandera
Karl Barth Influence in South Africa		Megan Depler
Karl Barth and the Confessing Church: What Lessons can we learn today		Anna Miller
Karl Barth and the Prophetic voice of the Church		Privilege Yesaya

Psychology 1:00-2:00pm	Moderator: Lori Mills	Derthick 308
Location, Location, Location: How Young Adults and Eating Disorders are Impacted by Geography		Haylee Gomez
Relationships between Social Identity and Heart Rate Variability in Female College Athletes		Baylee Reasor
The Correlation Between Sleep Disturbances and Test Anxiety		Montana DeLawder
The Relation of Social Media and Social Anxiety		Emily Ward

Social Justice 1:00-2:00pm	Moderator: Paul Blowers	Derthick 207
Racial Bias: How Judgements of Size Effect Perceived Threat		Mikayla Nidiffer, Alexandra Hayashi, Delia Ard
Police Corruption: Criminal Justice Majors' Perspectives on the Origins of Misbehavior		Janelle Zirger
How to Not Commit Genocide for Dummies		Samuel Hauser

STEM 1:00-2:00pm	Moderator: Destini Pettit	Derthick 110
Effectiveness of Novel Peptide Antibiotics Against Pseudomonas Aeruginosa Biofilms		Josh Carrico
Synthesis and physicochemical properties of the bis(para-fluorophenyl) derivative of phenytoin		Briana Martinez
FlameThrower Host Range Assessment		Jacob Riggs
Host Range Studies with Bacteriophages Isolated Against the Host Microbacterium Foliorum		Kayle Davis

STEM 1:00-2:00pm	Moderator: Kelly Griffith	Derthick 108
Fish and Food: Sustainable AI Hydroponic		Xander Stephens, Jackson Parmer, Mary Custodio
Reduce the Impact of Malaria by Targeting Infected Mosquitoes		Zachary Nelson, Jordon Moore, Cameron Shockey
Waste into Energy: Advancing a Sustainable Future Through Gasification		Conner Mowell, Jake Littlejohn Jackson McRae

2:15-3:15 Oral Sessions

Social Science 2:15-3:15pm	Moderator: Amy Edmonds	Derthick 310
A Public Health Investigation into the Effects of Food Deserts on Rural Emerging Adults' Health		McKenna Boykin
Food Insecurity Among Students at Milligan University		Samantha Maldonado
The Implementation of Teaching for Transfer Curriculum		Laci Newsom
Feedback Practices in the Secondary English Classroom: Written and Oral Corrective Feedback on Writing Assignments		Alayna Butler

Psychology/Exercise Science 2:15-3:15pm	Moderator: Trini Rangel	Derthick 207
How Athletes Manage Their Identity and Stress in Sports		Rowan Phillips
Relation between Sport Injuries, Psychological Responses, and Recovery among College Athlete		Cassie Lowe
The Effects of Positive Feedback on Self-Efficacy in College Athletes		Alexander Panner
The Influence of Sleep Disturbances on Positive Feeling, and Sport-Related Satisfaction, Frustration, and Fulfillment		Grayson Stoudt

Humanities 2:15-3:15pm	Moderator: Todd Edmondson	Derthick 210
Sometimes I'm Not Happy Being a Bloke in the Late-Twentieth Century: Nick Hornby, Margaret Thatcher, and the Neoliberal Consensus		Seth Bible
How Cringe Humor Can Lead to Social Change		Hanna Turner
My Group Me Too: David Mamet's Oleanna		Meredith Block
On Relearning the Sense of Self: Another View of Cheryl Strayed's Wild		Oliver Gragg

Computer Science and Physics 2:15-3:15pm	Moderator: David Frazier	Derthick 110
Confirmation of the Approaching Negative Extremum of Xi1 CMa		Larra Fouch
Potential Binariness Detected in the Luminous Blue Variable Candidate Hen 3-519		Faith Simmons
Small Language Model for C++ Assistance		Abby Bentley, Julia Kessler
The Free Energy Principle: A Mathematical Model for Self-Organizing Agents		Ryan Rasco

2:30-3:30 STEM POSTER SESSION

Gregory Lobby	
A Toxicological Epidemic: The Effects of Long Term Opioid Use on the Brain	Grace Beatty
Antimicrobial Peptide Synthesis to Combat P.aeruginosa	Elizabeth Bonami
Clean-up of water contaminated by nitrates in agriculture	Erica Tocholke
Cystic Fibrosis Antibiotic Testing	Haley Crozier
Deciphering the Time Window of Caffeine Toxicity in the Development of Xenopus laevis Embryo	Kylie Haas
Host range study of Bacteriophage WomenEater: Infectivity and Efficiency of plating on Microbacterium species	Ashley Shearer, Evan Moore
Medicine in Manure: Proving the Protein Functions of the Pasture Phage ELee24	Emme Clowdus, Sallie Hicks
Rate of Erosion affected by Weather Events	Abby Shipman
Silent Battlefields: The Role of DDT in War and its Aftermath	Jude Kerr
Smoke and Stardom: Unveiling Short-Term Health Impacts and Projecting Long-Term Health Consequences from Urban Wildfires	Makenzie Templeman Alexa Mathews
START Smart: Codon Calling For The Win	Shelby Stone, Kinley Shelton, Sarah Pritchard
The Impact of Developments in Large Language Models on Learning in Mathematics	Emma True
The Impact of Modern Applications on Consumer Driven Sustainability.	Marcella Steele

3:30-4:00 AWARDS AND DOOR PRIZES



Blue Ridge

UNDERGRADUATE RESEARCH CONFERENCE

Hosted by MILLIGAN UNIVERSITY



GRADUATE SCHOOL FAIR



APRIL 10 2025

1:30 PM - 3:30 PM
MILLIGAN UNIVERSITY
MARY SWORD COMMONS



MILLIGAN
UNIVERSITY